

# BASIC LIQUID 25 FULVAGRA® 25% CONCENTRATED LIQUID FULVIC ACID



BVL  
LSN 00A363-00/00

Approved for  
ORG. FARMING



Made in Germany



## BIOSTIMULANT WITH FULVIC ACIDS

**FULVAGRA® Liquid 25** is a bioactive growth promoting liquid based on aquatic fulvic acids.

Fulvic acids stimulate the root development and metabolism of plants and increase plant resistance to abiotic stress. Fulvic acids act as natural chelators, mobilizing nutrients in the soil, improving their availability and uptake by the plant. Due to the small molecular size, fulvic acids can be taken up by the plants via the leaf surface and through the roots.

**FULVAGRA® Liquid 25** can be used for both foliar and soil applications or in hydroponic systems. It can be combined with fertilizer or pesticide. (Pre-mixing test advised.)

## BENEFITS & RECOMMENDED APPLICATION

- Increases the germination of seeds and supports root development
- Acts as natural complexing agent and increases fertilizer use efficiency in the soil and promotes nutrient uptake by plants
- Stimulates vigorous root development
- Increases the yield and improves plant quality
- Increases the cation exchange capacity (CEC) in soil
- Easy to handle, with good technical compatibility and miscibility with other additives
- Stimulates enzymatic activity and increases the plant's own defenses against abiotic Stress factors
- Promotes the collection and transport of micronutrients contained in leaf fertilizers
- Acts as an antioxidant against free radicals and thus prevents cellular damage

### FIELDS OF APPLICATION

- Agriculture
- Vegetable Production
- Fruit Production
- Substrate Cultivation
- Turf and Landscaping
- Seed Treatment

### RECOMMENDED APPLICATION RATES\*

Soil	30 – 50 L/ha divided into several applications (5 – 10 L/ha) during the vegetation period
Foliar	0.5 L/100 L water every two weeks during the vegetation period
Substrates	0.3 – 0.5 L/m <sup>3</sup>
Seeds	0.5 % or 500 mL/100 kg seeds as dressing according to thousand grain weight (T.G.W.)
Hydroponics	10 – 20 ml/1000 L nutrient solution during the cultivation cycle

\* These are standard recommendations that can vary according to soil properties, cultivated crop and local system conditions.

### INHERENT COMPOSITION

(Typical values based on Fresh Matter)

Total Humic Acids <sup>1/2</sup>	18 %	Organic Substance	20 – 21 %
Humic Acid <sup>1/2</sup>	1 %	pH – value	8
Fulvic Acid <sup>1/2</sup>	17 %	Sodium (Na)	3 – 3.5 %
Dry Matter	23 – 25 %	Density	1.10 kg/L

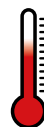
<sup>1</sup> according to ISO 12728:5 | Prof. Rob Comans (Soil Chemist, Wageningen University)  
Hydrophobic and Hydrophilic Fulvic Acids

<sup>2</sup> according to ISO 19822 | HPTA | AAPFCO | IHSS Analysis method  
Hydrophobic Fulvic Acid 11%

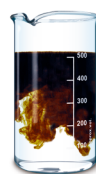
### STORAGE

Store in a dry place, protected from frost, heat and direct sunlight.

STORE OUT OF THE REACH OF CHILDREN



### DELIVERY SPECS



German technology

Administration & Distribution: **HUMINTECH GMBH**

Am Pösenberg 9 – 13 • 41517 Grevenbroich / Germany • E-Mail: info@humintech.com • Internet: www.humintech.com

